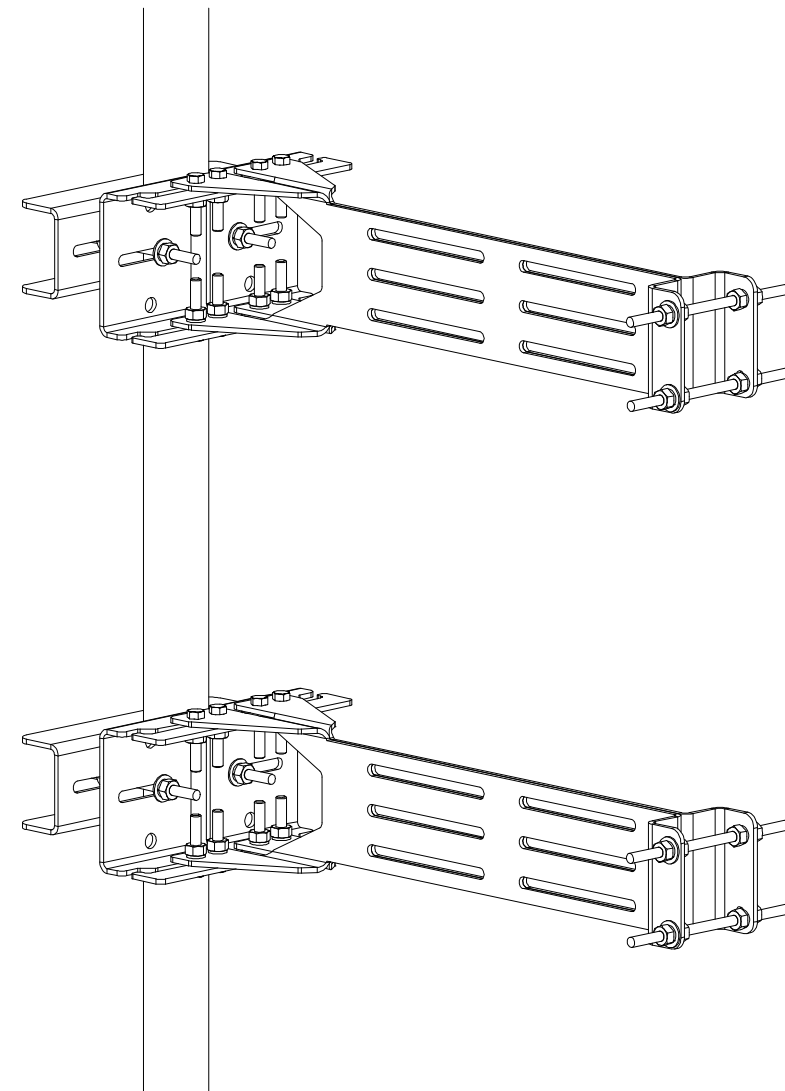


PARTS LIST						
ITEM	QTY	PART NO.	PART DESCRIPTION	LENGTH	UNIT WT.	NET WT.
1	4	X-RRUSPT	SIDE PANEL FOR RRU-FU2	30 in	6.79	27.15
2	2	X-RRUSBPT	BACKING PLATE FOR ANTENNA STANDOFF WELDMENT	12 in	5.42	10.83
3	2	X-RRUSBPTB	BACKING PLATE FOR ANTENNA STANDOFF WELDMENT	12 in	3.62	7.25
4	4	G38R-8	3/8" DIA. X 8" HDG. THREADED ROD (SAE J429 GR-2)	8 in	0.25	1.00
5	4	G38R-6	3/8" x 6" THREADED ROD (HDG.)		0.19	0.75
6	16	G3802	3/8" x 2" HDG HEX BOLT GR5		0.09	1.40
7	32	G38FW	3/8" HDG USS FLATWASHER		0.01	0.38
8	40	G38LW	3/8" HDG LOCKWASHER		0.01	0.27
9	40	G38NUT	3/8" HDG HEAVY 2H HEX NUT		0.03	1.35
					TOTAL WT. #	50.39



ALTERNATE MOUNTING CONFIGURATION

TOLERANCE NOTES

TOLERANCES ON DIMENSIONS, UNLESS OTHERWISE NOTED ARE:
SAWED, SHEARED AND GAS CUT EDGES ($\pm 0.030"$)
DRILLED AND GAS CUT HOLES ($\pm 0.030"$) - NO CONING OF HOLES
LASER CUT EDGES AND HOLES ($\pm 0.010"$) - NO CONING OF HOLES
BENDS AND ANGLES ARE $\pm 1/2$ DEGREE
ALL OTHER MACHINING ($\pm 0.030"$)
ALL OTHER ASSEMBLY ($\pm 0.060"$)

PROPRIETARY NOTE:
THE DATA AND TECHNIQUES CONTAINED IN THIS DRAWING ARE PROPRIETARY INFORMATION OF VALMONT INDUSTRIES AND CONSIDERED A TRADE SECRET. ANY USE OR DISCLOSURE WITHOUT THE CONSENT OF VALMONT INDUSTRIES IS STRICTLY PROHIBITED.

DESCRIPTION

DUAL REMOTE RADIO UNIT
FAST UNIVERSAL MOUNT

CPD NO.
SP1

DRAWN BY
CEK 10/6/2022

ENG. APPROVAL
10/7/2022

CLASS
87

SUB
02

DRAWING USAGE
CUSTOMER

CHECKED BY
JET 10/7/2022

PART NO.

RRU-FU2

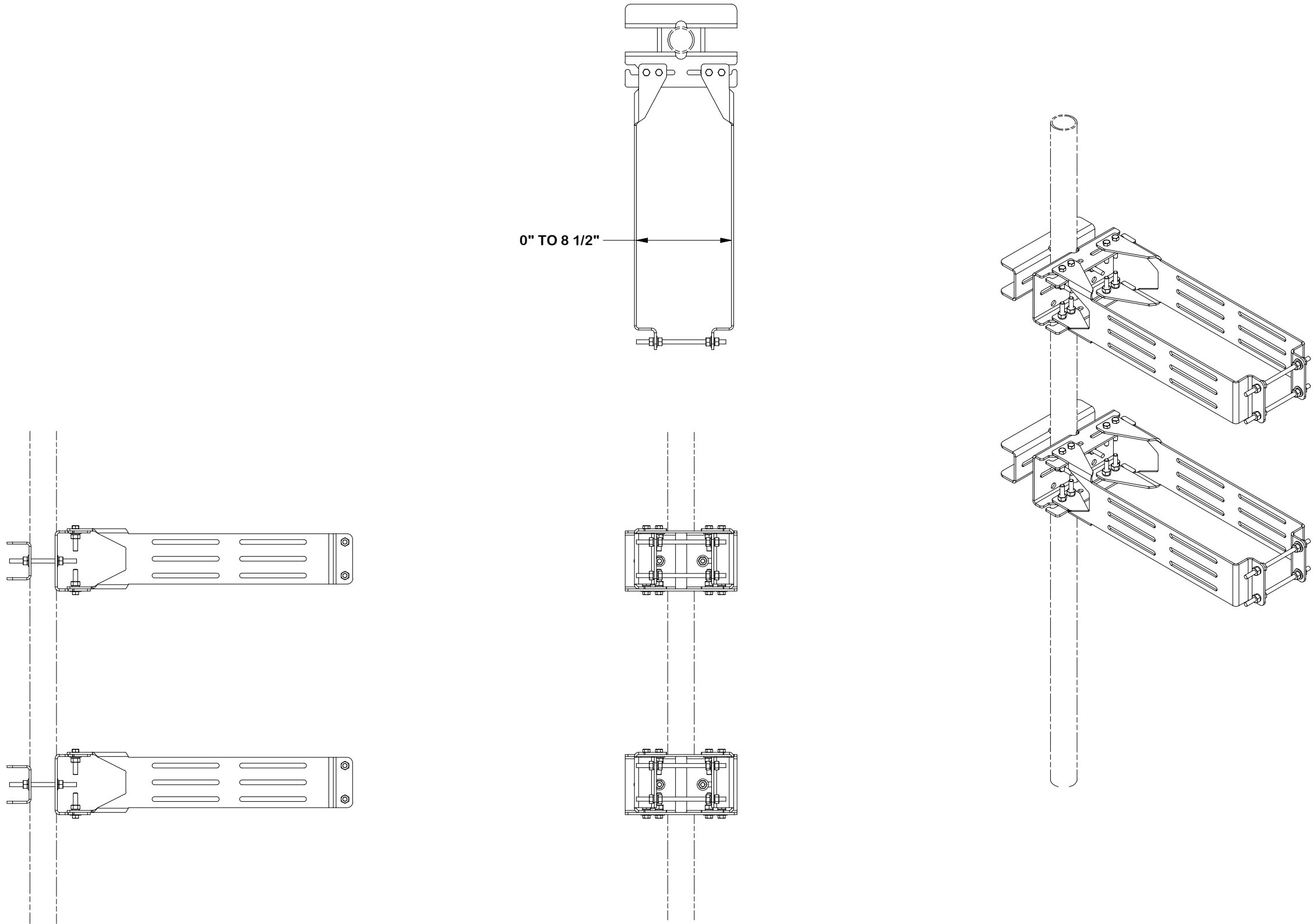
DWG. NO.

RRU-FU2



Engineering
Support Team:
1-888-753-7446

A valmont COMPANY



TOLERANCE NOTES

TOLERANCES ON DIMENSIONS, UNLESS OTHERWISE NOTED ARE:
SAWED, SHEARED AND GAS CUT EDGES ($\pm 0.030''$)
DRILLED AND GAS CUT HOLES ($\pm 0.030''$) - NO CONING OF HOLES
LASER CUT EDGES AND HOLES ($\pm 0.010''$) - NO CONING OF HOLES
BENDS AND ANGLES ARE $\pm 1/2$ DEGREE
ALL OTHER MACHINING ($\pm 0.030''$)
ALL OTHER ASSEMBLY ($\pm 0.060''$)

PROPRIETARY NOTE:
THE DATA AND TECHNIQUES CONTAINED IN THIS DRAWING ARE PROPRIETARY INFORMATION OF VALMONT INDUSTRIES AND CONSIDERED A TRADE SECRET. ANY USE OR DISCLOSURE WITHOUT THE CONSENT OF VALMONT INDUSTRIES IS STRICTLY PROHIBITED.

DESCRIPTION				<div><div>SITE PRO1</div><div>A valmont COMPANY</div></div>	
DUAL REMOTE RADIO UNIT FAST UNIVERSAL MOUNT				Engineering Support Team: 1-888-753-7446	
CPD NO. SP1	DRAWN BY CEK	10/6/2022	ENG. APPROVAL 10/7/2022	PART NO. RRU-FU2	PAGE 2 OF 2
CLASS 87	SUB 02	DRAWING USAGE CUSTOMER	CHECKED BY JET	10/7/2022	
				DWG. NO. RRU-FU2	